



Olney Art Association

supporting local artists

ESTABLISHED IN 1974

Visit our website at: olneyartassociation.org



Note the Date

2019

Sun Apr 28 **La Galeria at Ranazul Exhibit**
Take down show and
Pick up art(See page 6)

Sat May 4 **Olney Library Exhibit**
Olney Library
Pick up and Drop off
10-11 a.m. (See page 3)

Tues May 7 **OAA Meeting**
7-9 p.m.
at the Buffington Bldg.,
Olney, MD

Sat May 11 **Paint Out at Bella Vita**
at Bella Vita Farm
9 a.m.– Noon (See page 6)

Mon Jun 3 **OAA Board Meeting**
Olney Library
9:30 a.m.

Tues July 2 **OAA Meeting**
7-9 p.m.
at the Buffington Bldg.,
Olney, MD

August **OAA Exhibit at Sandy Spring Museum**

President's Message

Dear Fellow Artists,

In my last message, I mentioned Stephen Covey, author of the best seller *Seven Habits of Highly Effective People*. He mentions a need for people to sharpen the saw or get ready and expand your knowledge base and improve your self-confidence. With the same theme in mind, I want to let you know of some great local resources to improve art techniques and skills. The US Postal Service delivered a new Montgomery College catalog of summer classes and workshops. They are coming out with some really awesome opportunities. How about a one-day (3 hour) course in cartooning; or a series of one-day drawing courses at Takoma Park, Germantown or Rockville campuses. Of course, they offer a bunch of classes in watercolor, acrylic, oil, landscape painting mostly at the art school Takoma Park campus. Some in-

teresting courses are Painting from Realism to Abstraction, Plein Air Urban Painting. Our photographers should have a look also because MC offers some great digital photography programs. Enrollment costs are reduced for senior citizens. More info at:

<https://www.montgomerycollege.edu/communityarts>

Also, a noteworthy workshop on Portrait and Figure Painting on the Beach will be offered by John Ebersberger, Saturday and Sunday June 8 or 9. Location will be on the Magothy River. John, a student of the great American artist Henry Hensche, paints in the Annapolis area and teaches at the Maryland Hall for the Arts. He is an award-winning impressionist teacher. More info at: <https://www.JohnEbersberger.com>

For the plein air painting fans, Sandy Spring Museum will be offering a two-day workshop given by Valerie Craig, October

25 and 26. Valerie is an artist with more than 20 years painting water color and oil in Ireland, France and throughout the United States. She has won awards in Plein Air Easton, Wayne Plein Air, and the American Women Artists Show. More info at <https://www.sandyspringmuseum.org>

At the next OAA meeting, May 7 we will have a presentation by Doug Moulden, a Frederick based painter with a unique technique for creating amazing works of art. More info at:

<https://www.DouglasMoulden.com>

Congratulations to all who participated in the Ranazul show chaired by Sherry José and we look forward to seeing the show at the Friends Meeting House chaired by Margo Lehman.

Keep Painting,
David Terrar

March 5th Member Meeting

In March, OAA welcomed Allison Menke, an accomplished plein air painter who gave us a demonstration of her approach to plein air.



May 7th Member Meeting

Wanted: Show Committee and Chairman

To be discussed at our meeting:

**OAA's August Show
at Sandy Spring Museum**

We have no Chair for this event. Will it be our juried show even though it is in August?

We also have on the horizon a show in September/October at one of the city of Gaithersburg's venues, not necessarily

Kentlands Mansion that also needs a Show chair or Co-Chairs.

Please give some thought to helping out **YOUR** OAA . Find a friend to help out and become Co Chairs. Gather a group of friends and become a committee. Many hands make light work. Co-Chairs can divide any tasks that come up. Show Chairs are not lone rangers but work closely with OAA board members.

Our presenter will be Douglas Moulden, a Frederick resident who works in acrylic. The following is an excerpt from his Artist Statement:

...My paintings are as much sculpture as they are flat imagery. I start off by constructing a form from plywood that I have warped and shaped. Plywood offers more structure and is more malleable than canvas. Acrylic paints aren't just colorful, but have physical properties such as plasticity and volume. I use these properties to build up structure in space. I extrude paint onto the plywood construction much like caulk out of a caulk gun. I build up the surface through many layers using gallons of paint until the surface is thick, rich and highly varied. Sometimes I carve into it. The end result is a heavy, rich surface that resembles vines, tree bark, woven fabric, rock or other surfaces. Texture and surface as well as a shape to the "canvas" lend sculptural qualities to my paintings. It becomes difficult to separate what is two dimensional from what is sculptural.

OAA Announcements

OAA Library Exhibit

The next library swap date is Saturday, May 4th from 10:15 - 11:15! Please arrive on time to pick up your artwork.

If you would like to have a piece in the next Library Exhibition, please send the title, medium, FRAMED size and price as well as the contact information you would like to have published to Margo Lehman and cmmargo@verizon.net. YOU MUST put the word Library in your subject

line or your email may be missed!

All artwork must be properly framed and wired, works on paper must be matted and behind glass or plexi-glass. If you have any questions about this show, contact Margo directly!

OAA Will Send a Card

If you know of a member who needs a little "sunshine" in the form of a get well card, sympathy card or other acknowledgement, please contact Jean Cathey and

give her the details and she will send an appropriate card on behalf of OAA. Her number is 240-328-0607 (c) .

Publicity Chair Wanted

We are still in search of someone to fill this important position.

This OAA Board position is currently vacant and it is one of our most important seats. We need someone to let the community of Olney know about our organization and our exhibits.

Contemporary Art in Vegas

Catch Up on Contemporary Art in Vegas on Your Next Vacation

If you'd like your next vacay to include some cutting-edge art, you might consider a visit to the newly remodeled Palms Casino Resort in Las Vegas where the work of British artist Damien Hirst is on display. Hirst is one of the Young British Artists who dominated the art scene in Britain in the 1990s.

In the pool/club area is his 60-foot-tall, headless bronze statue, entitled

"Demon with Bowl". Hirst also designed the "Unknown" bar, in which his work, "The Unknown (Explored, Explained, Exploded)" is on display. This work features a shark that has been chopped into pieces and is suspended in formaldehyde -- not the kind of thing one sees every day. There are many other Hirst pieces around the resort, along with works by Andy Warhol, Jean-Michel Basquiat and contemporary Brooklyn artist KAWS. You might want to book the Empathy Suite, which was master-

mindful by Hirst and includes two massage rooms and a cantilevered pool overlooking the Las Vegas Strip, as well as 6 large-scale works commissioned especially for its rooms and more. It boasts 9,000 square feet and is 2-stories tall. You will be able to tell your fellow club members whether the price of \$10,000 a night with a 2-night minimum stay is justified by the ambience and the art. Catch a preview at www.palms.com.

--Susan Nerlinger

OAA OFFICERS

David Terrar	President	301-253-4589 david_terror@msn.com
Joan Hobbs	Vice President	301-384-3150 jmhobbs@verizon.net
Sandy Yagel	Secretary	301-801-9832 gnsyagel@gmail.com
Sandra Bourdeaux	Treasurer	301-926-6871 ulmus146m@verizon.net
Barbara Kahla	Membership	301-996-9360 barb.kahla@gmail.com
Lori Myers	Newsletter	240-477-0843 lmyers1761@live.com

OAA Website

olneyartassociation.org

Susan Brown

Is the OAA Website Manager

If you would like to put a digital photo of your artwork on the website, please email Susan. Each member will be allowed (1) image at a time and you may change them at any time. We need photos of your paintings for the gallery.

Email Susan at:

susan.brown@shenandoah-webworks.com



Member News

- Eleven OAA members entered the The Women’s Club of Chevy Chase 44th Annual Art Show and Sale in April and garnered 10 prizes among them. The awards were given to:

Ken Bachman, First prize in portraits for *Endurance*, and Honorable Mention in oils for *Glen Echo Heights*; **Sandra Bourdeaux**, Third prize in acrylics for *Brookgreen I*; **Susan Brown**, 3rd prize in minis for *Night Garden*; **Howard Clark**, Second prize for *Air Force Memorial* and Honorable Mention for *Brookside Gardens Pano* in photography; **Margo Lehman**, Third prize in oils for *Ventoux Guards the Crops* in oils and Honorable Mention in minis for *Bag Ladies*; **Isabella Martire** BEST IN SHOW for *Power*; **Deborah Wolfe**, Honorable Mention in mixed media for *Kilauea II*
The juror was Kathleen Knight, art instructor at Montgomery College.

- **Peter Wuttke** will be showing 10 of his new series of abstracts in The Meeting House Gallery, June 22-August 24. The web site for their ongoing



Peter Wuttke, Touch of Yellow #101

shows is www.themeetinghousegallery.org/art-gallery.

- **Angela Lacy’s** watercolor painting was accepted into the Watercolor USA National Juried Exhibit which will be held at Springfield Art Museum in Springfield, Missouri, June 8 - Sept 1 2019. Dean Mitchell is the Juror for the show.

- **Freddi Weiner** is excited to share that her piece *Yellow Flowers at Sunset* sold at the opening night of the exhibit at Ranazul. Also, Photos By Freddi will have 2 pieces on exhibit at the *Wings of Hope* exhibit at the Sandy Spring Friends school. Freddi’s *Cooper’s Hawk at Bath Time* and *Egret Breakfast* will both be on exhibit April 19- May 31st.
- **Isabella Martire** received best in show at the Rockville Art League March Members Show.
- Three of the four prints that **Howard Clark** entered in the Montgomery Village Art, Craft and Photography Show in March came home with ribbons. Soon Howard will have one print in the Art's Barn juried exhibition on "Water" (See **Events**, page 5); one in the Rockville Jewish Community Center's show of "Art by Adults", March 19-June 17; and a photo of five birds in their nest at the Wings of Hope exhibit April 19-May 31 by the Sandy Spring Friends Meeting. (See **Events**, page 5)
- In addition to already being recognized for her artwork in acrylic and mixed media, **Sharon Lee Minor** recently received full certification as an instructor in watercolor, and drawing by Grumbacher, a brand trusted by students, professors, art conservationists, and professional artists throughout the U.S. since 1905. She received the "Grumbacher Medallion".
- Artwork by **Pauline Rakis** will be featured at MASHUP: Annual Members’ Show, April 26-May 26. (See **Events**, page 5) and ART (+WINE) HOP TAKOMA (See **Events**, page 5). Her work can also be seen at District Arts Gallery, 15 N Market Street, Frederick, MD 21701; in an ongoing exhibit: Gallery Hours: Wed - Thur 12-6 pm, Fri - Sat 12-8 pm, Sun 12-5 pm

Happy Birthday

April

Joan Hobbs20th

Events

Water at the Gaithersburg Arts Barn. The show opens Friday, May 17 and runs through Sunday, July 14 with a reception on Saturday, June 1 from 1:00-3:00 pm. The show's theme is: "Water, our source of life, is a great inspiration for art." The Arts Barn Gallery is located at 311 Kent Square Road, Gaithersburg, MD 20878

MASHUP: Annual Members' Show, April 26, 6:30 - 9 PM. Pyramid Atlantic Art Center, 4318 Gallatin Street, Hyattsville, MD. In this uncurated and unconventional show, members at Pyramid Atlantic Art Center are invited to exhibit a work of their choice. The show is intended to be a mashup of styles, mediums, and price points hung riotously throughout the gallery. Exhibition on view April 26 - May 26. Learn more.

ART (+ WINE) HOP TAKOMA, Kin Da, 6923 Laurel Ave, Takoma Park, MD 20912, April 27, 11 - 5 PM & April 28, 10 - 3 PM. A full weekend of art and live performances is planned in Takoma (MD and DC) for the 11th annual Art Hop Arts Fest. The work of over 100 artists will be installed inside the shops, restaurants, galleries and cafes of Takoma creating a lively arts district. Learn more.

Avian Evening at Sandy Spring Friends Meeting on Saturday, April 20th. All are invited. Dinner is at 6pm, the Friends will provide the main meal, but please bring a side dish, salad or dessert to share. This is followed by a presentation by the Department of Natural Resources called Scales & Tails, with an emphasis on birds. This is an excellent presentation for children and grandchildren or for anyone who wants see the animals up close and personal. An excellent photo op! This event will also serve as a reception for the Wings of Hope art exhibition. Approximately 20 pieces will be on display in the Gallery at the Lyceum (17801 Meeting House Road) with at least 8 coming from members of OAA! Everyone is welcome!

The American Pre-Raphaelites: Radical Realists, National Gallery of Art, West Building, Ground Floor, East Outer Tier, April 14 – July 21, 2019. In celebration of the 200th anniversary of the birth of John Ruskin (1819–1900), the most influential art critic of the Victorian era, the Gallery will present more than 90 paintings, watercolors, and drawings created by American artists who were profoundly influenced by Ruskin's call for a revolutionary change in the practice of art. The exhibition includes a number of recently discovered works never before exhibited publicly. Ruskin's rejection of traditional academic art and his plea for works that reflected a deep reverence for both the spiritual and scientific qualities of the natural world found a sympathetic audience in America among a group of like-minded artists, architects, scientists, critics, and collectors.

Kritt Studio Classes

Draw a Still Life
Monday, May 6
(Morning and Evening classes)

Painting Pets
Tuesday, May 7
(Morning and Evening classes)

Advanced Groups and **Private Lessons**

For more info
call Penny at 301/989-1799

Rossmoor Art Guild, at Leisure World, is having an **Apples Into Art Workshop**, patterned after the paint-and-wine events, on Tuesday, May 7, 1-3:30 in the Art Studio, Club House I. Participants can select which medium: acrylics, watercolor, pastels, pencil. Each will be guided by members who can instruct them. \$20. Art supplies will be provided, as will apple pie and a little something to wash it down. Register by April 20 and if you have any questions, contact Judy Kirkland at: 301-938-3630 or Kirkland.JQ@gmail.com.

Ann Bolt, President

Paint Out at Bella Vita

OAA Plein Air Paint Out at BELLA VITA

FARM on Saturday, May 11th, 9am - 12pm.

For 3 hours, you can set up and paint anywhere on the property you want and there are lots of interesting scenes you'll be sure to find. Several people have asked if it's okay to come and just take pictures to paint in studio, and that's fine.

Parking will be around the large red barn. Restroom facilities are inside the house. Please bring your own supplies, including water etc. and be sure and clean up any mess. We are grateful to Angie McNalley at Bella Vita for this opportunity. Enjoy!

DATE: Saturday, May 11, 2019

TIME: 9am - 12:00pm

PLACE: Bella Vita Farm

4901 Brookeville Rd

Brookeville, Md 20833

RSVP Lori at:

lmyers1761@live.com

DIRECTIONS:

From Olney on Rt. 108 heading toward Gaithersburg:

Turn right onto Zion Rd.

Turn right onto Brookeville Rd at STOP sign

Bella Vita will be on your left, turn in at 2nd left

From Rt. 108 heading east toward Olney:

Turn left onto Brookeville Rd

Go through STOP sign

Bella Vita will be on your left, turn in at 2nd left

From Rt. 97, Georgia Avenue

Follow Georgia Avenue through Brookeville

Turn left at STOP sign (still Rt. 97)

At bottom of hill, turn left onto Brookeville Rd

Go approximately 1.5 miles

Bella Vita will be on your right. (If you get to Zion Rd,

you've gone too far)

Organized by Debby Wolfe

Lori Myers, Chairperson

La Galeria at Ranazul

The Eighth Annual Ranazul Show is still on display in La Galeria until April 27th. Our reception on April 7th was very well attended and enjoyed by all. Fred-di Weiner sold her photograph, "Yellow Flowers at Sunset", and several prints were sold from the bins as well. If you were unable to make the reception,

drop by before the show closes on the 27th and enjoy the artwork and maybe stay for a bite to eat too. Many thanks to all who participated and especially the ladies who completed the committee, Ann Bolt and Freddi Weiner. Our 2020 show is tentatively scheduled for May.

Call for Artists

Eye of the Beholder,

Maryland Federation of Art (MFA) Annapolis

For more info:

<https://mdfedart.com/portfolio/eyeofthebeholder/>

Deadline: April 30

#Woman

MFA Annapolis

For more info:

<https://mdfedart.com/portfolio/woman/>

Deadline: May 7

Artist' Choice

Foundry Gallery

DC

For more info:

<https://www.foundrygallery.org/juried-shows>

Deadline: June 1

America Is ?

Touchstone Gallery

DC

For more info:

<https://www.touchstonegallery.com/call-for-entries>

Deadline: June 10

Chroma

Pepco Edison Place

DC

For more info:

<https://www.artimpactinternational.org/chroma-call>

Deadline: August 31

Quick Fixes for Compositions

By Penny Kritt

We've all been there. The composition seemed like such a good idea. But the actual product is just boring. It would make a nice greeting card, but as a larger scale work of art, it's just "meh". Sometimes the first impulse is to trash the whole thing and start again. But if you haven't at least figured out the problem, you'll get to that same meh again with no plan of action. So let's look at some ideas that might lessen that stack of "too good to throw out" stuff that we all have stashed away.

As with the vast majority of "not quite there" paintings, this one is all mid tones.

Here's a sample of the kind of painting people do, particularly in watercolor. It's a loose rendering of a ballerina tying her toe shoe ribbons (Fig. 1 below). I liked the composition. Both the vertical marks on the wall and the horizontal floor boards take the viewer right to the figure.



Figure 1

Regardless of where your eyes start, there is a lovely oval that takes them around the figure and maybe around again since the first trip was so satisfying. Whether you started up at her head or down by her feet, there was a circular path created by her arms. On the second trip around the figure, you'd see the sash at her waist and the flare of her skirt. At the lowest point, her shoe and its

pink ribbons were a nice surprise to an otherwise quiet scene.

In Fig. 2 below, I've made a big box in the lower left so you could see what color her shoe ribbons were and compare it to the brighter pink that I used to liven the scene up a bit. The old color was a bright pink that I had toned down with a little green (the complement on the other side of the color wheel).



Figure 2

The new pink is so strong that it almost makes everything else disappear! Timid artists would immediately get rid of that color, but the pro knows that the way to tone down an intense color is to use it in a less intense way elsewhere!

In Fig. 3 below, I've put the original ribbon color swatch back so you can see how I used something similar all around the painting. There's a light wash both in the upper left and lower right corners. A slightly lighter wash is on the floorboards to the left of her skirt. A few folds of her skirt have a brighter wash of pink.



Figure 3

I created another wash that was a little darker and brighter pink. That puddle was used for her cheek, the curve

of her left shoulder and on the top of her dress. Those purer colors cause the eye to spend more time in those locations while still finding continuity with the lighter, more neutral pink washes on the lower part of the figure.

The image shows how slightly changing intensity and temperature on colors saved the composition. I wanted to capture that quiet, contemplative moment a performer feels before a performance.

Another approach to making the image more compelling could be to increase the value contrasts by putting much darker shapes next to ones that were much lighter. But that would have made the scene too "exciting".

Fig. 4 below shows the image in grayscale. I added blocks of pure black and white for comparison. You can see that the painting is solidly in the mid tone range.

Figure 4



created this composition as an experiment. The goal was to create a "frame-worthy" painting that was all in mid tones. This wasn't about the thrill of the performance. It was about the time just before it, when a dancer contemplates and plans how to achieve that moment of athletic excellence. The usual

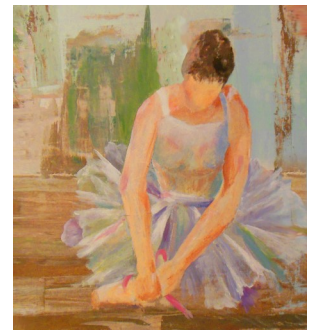


Figure 5

treatment for a mid tone painting is to add bigger value contrasts as seen in Fig. 5 above. But look at how that changed the emotion of the painting. There is now an element of mystery created by all those darks and the mood is more somber. This certainly could have become part of a series where I chose to see how many emotional moods that could be done with this same composition.

The final painting is below. I brightened the colors a little to get more temperature contrast between the background and the figure. The walls behind her are now a slightly brighter and cooler green. That makes her warmer orange skin stand out!

Ballerina



Acrylic on Canvas
By Penny Kritt

The composition is still a mid tone and contemplative, but the mood is a little happier. New areas of interest were added by contrasting warm and cool shapes rather than adding value contrasts. Now we see a performer who is just reviewing the performance that she has repeatedly successfully completed. How's that for a new bag of tricks!

For classes or private lessons, contact Penny at 301/989-1799

©Penny Kritt 2019

OAA Sweatshirts

Made to Order



– **Only \$30!** Embroidered with the Olney Art Association name, web site and an artist's palette and just in time for those cool spring morning walks, paint-outs, photographs, and general outdoor activities. The sweatshirt is made by Jerzees in a 50/50 cotton/poly blend, so it is easy care – just toss it into the washer and dryer. It is available in twenty-four different colors and sizes from small to 4XL. To order yours, just send an email to swdrew@verizon.net or talk to Sally Drew at the next OAA meeting.

A Work of Art by Debra Halprin Mastering the Fine Art of Giclée Printing



Create Fine Art Reproductions of
your Paintings, Drawings and
Photographs

on Watercolor Paper or Canvas
.12 cents per sq. inch on Paper
.15 cents per sq. inch on Canvas

Photography Fee Starting at \$35-
Includes Digital Files in TIFF and Jpeg
format, Proofs and Color Enhancements

For All Your Giclée Printing Needs

www.Halprinart.com

Halprinart@aol.com

301-910-4750

Located in Rockville, Maryland

Penny Kritt 301-989-1799

Classes and private lessons in a working art studio

Painting Drawing Color Theory
Design & Composition

Beginners - a calm, supportive place

Intermediate & Advanced - move your art
to a higher level

www.pennykritt.com

Artful Framers of Olney

Custom Framing

25% DISCOUNT for OAA members

George Miller
3426 Olney-Laytonsville Road
Olney, MD 20832
(301) 570-0223

Open: Monday & Saturday 10 AM-5 PM

Tues.-Fri. 10 AM-6 PM