



# Olney Art Association

ESTABLISHED IN 1974

Visit our website at:

[olneyartassociation.org](http://olneyartassociation.org)



## Note the Date

	<b>2016</b>		
<b>Feb 20 - Mar 16</b>	Submit Entries for <b>Willow Manor Show</b> See page 3	<b>Fri Apr 8</b>	Artist's Reception at Willow Manor, 6-9p.m.
<b>Tues Mar 1</b>	<b>OAA Meeting</b> , 7-9 p.m. at the Buffington Bldg., Olney, MD	<b>Apr 8 - 17</b>	Willow Manor Show
<b>Mar 7 - Apr 4</b>	Submit Entries for Show at La Galeria at Ranazul See page 3	<b>Sat Apr 16</b>	<b>Olney Library Exhibit</b> Pick up and Drop off Artwork at 10 a.m.
		<b>May 1 -May 29</b>	Exhibit at La Galeria at Ranazul Restaurant
		<b>Tues May 3</b>	<b>OAA Meeting</b> , 7-9 p.m. at the Buffington Bldg., Olney, MD

## President's Message

Dear Fellow Artists and Members of OAA ,

Welcome to another exciting year of art. We are very excited to be your new presidents! All of us on the board are working hard to arrange more opportunities for art sales and exposure in and around our community to spread and inspire the love of art.

**Connie:** "For an artist, inspiration is everything. Being inspired is a gift! Sometimes we have to seek it in ourselves. Recently I spent almost 3 weeks in Old Town, Maine, near Bangor. The snow, the houses, rivers and railroad tracks reminded me of life 40 years ago here. I painted away for hours, seeing the world around me and painting it like I had never seen a house or tree before in my life. I now know why so many artists in the past went out into the world to paint beyond their hometown. So take that daytrip to Harper's Ferry, Great Falls or to a nearby small town. Bring your camera, your paints, pastels or pencils. Be inspired, dream and let your mind create your very own special brand of art."

**David:** "In the ever present political process of selecting a new president to lead our country, which seems to never end, I am more inspired by seeing the artwork produced by other artists. We are eager to meet each of you and see your art and discuss your art projects."

Until next time,

Connie Gallerizzo and David Terrar

### Inside

President's Message	1	The Inn at Brookeville Farms	Kritt's Tip	6
Meeting News	2	Year Long Exhibit	Classes	7
Willow Manor Exhibit	3	Member News	Call for Artist's	7
Ranazul Exhibit	3	Events		5

# January 5th Member Meeting

## OAA Leadership: A Smooth Transition

On Tuesday evening, Jan 5, OAA began its 42nd year with the introduction of our new co-presidents, Connie Gallerizzo and David Terrar. With great energy, they told us about their plans for the year, including exhibits at Ranazul, Brookside Gardens, Sandy Spring Museum, The Inn at Brookeville Farms, Woodlawn, The Olney Farmer's and Artists Market, Willow Manor, Longwood Center and Olney Library, plus potential for Manor Country Club and in-school programs. Connie has created a page for OAA on Facebook.

But we cannot forget the great job done by the outgoing co-presidents, Karen Norman and Peggy Tadej. Under their leadership, we held our first workshops at Olney library, celebrated our 40th anniversary with a fun luncheon at Sandy

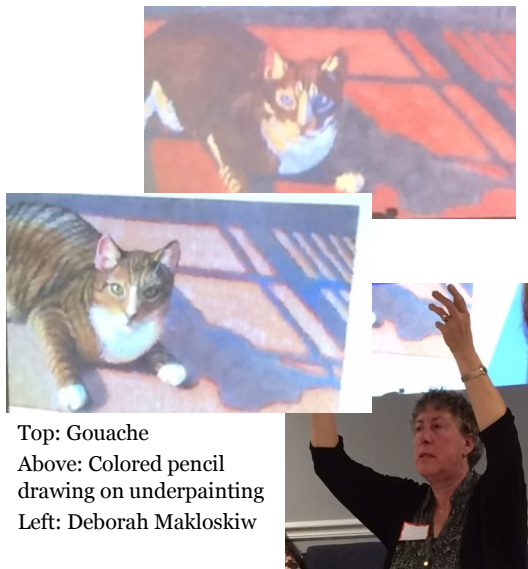
Spring Museum, had three successful shows at Woodlawn, continued our exhibits at Ranazul, Olney Library and The Inn at Brookeville Farms, and learned new techniques from our excellent meeting speakers.

Both Karen and Peggy will remain as members of the board. Karen will continue to find excellent speakers for our meetings.

We sincerely thank them for their dedication and guidance.

At the same meeting, Debby Wolfe was introduced as our new treasurer, following in the footsteps of Sara Becker, who took the position after our former treasurer, Selma Robey, became too ill to perform her duties. Thank you, Sara. And congratulations and thank you, Debby, for stepping up to fill the position for the year.

Also at our January meeting, Deborah Maklowski shared with OAA members the technique of using a gouache underpainting beneath colored pencil drawings. She reiterated the concept of editing our reference photos to get the best composition.



Top: Gouache  
Above: Colored pencil drawing on underpainting  
Left: Deborah Maklowski

## March 1st Meeting

Connie and David will be announcing plans for upcoming shows and events including the Willow Manor Show. Sherry Jose' will talk about the exhibit at La Galeria in Ranazul Restaurant.

Glen Kessler will be our guest speaker. His topic will be color theory. Glen is the founder and director of The Compass Atelier, a unique art school located within the fastest growing art center in the area, Artists & Makers Studios-- home to nearly 70 artists and artisans.



Reference photo for *Sidewalk II*



*Sidewalk II* underpainting and with colored pencil applied

## Willow Manor Show

Our next show will be at **Willow Manor Retirement Apartment Community** right in Olney. It will be a non-juried show from April 8, 2016 through April 17. There will be a reception for the artists and their families on Friday evening, April 8 from 6-9 pm with hors d'oeuvres and wine.

### Exhibit dates:

April 8 - April 17

### Delivery of work:

April 7 from 1-2pm

### Pick up work:

April 17 from 1-3pm

We are accepting only 15 pieces, no larger than 16x20 on a first come, first served basis. There is no fee to enter and entries will

be accepted beginning February 20 through March 16.

Email the following information to Connie Gallerizzo, Chairperson at [haircj123@yahoo.com](mailto:haircj123@yahoo.com) :

Artist Name & Contact Info

Title of painting

Medium

Size

Price

## Exhibit at La Galeria in Ranazul Restaurant

**Our Fifth Annual show at La Galeria in Ranazul Restaurant** in Fulton will be hung on May 1st and come down May 29th. There is no formal theme for this year; your work should simply be tasteful and interesting for a fine dining establishment. Ranazul provides our reception including complimentary tapas and beverages and they take 20% commission on sold work. OAA takes no commission and there is no fee to enter. Your original pieces may be abstract, landscape or still life in any medium. Framing should be simple and clean in plain black, wood, brass or chrome frames as well as finished wrapped canvas. Please see the "Olney Art Association Application" for further information and directions.

**Applications to be submitted:** March 7th and no later than April 4, 2016. Please include the following:

- OAA Application.
- Ranazul "Art Gallery Agreement", (pages 1 & 2 only)
- Pictures (photos) of the original artwork you are submitting, (limit 2).

The registration forms will be emailed and will be available at the next meeting as well. Forms will be sent by USPS to members without email.

Any questions or comments can be directed to Sherry Jose' at the above email or 301-681-4786. If you would be interested in helping out with this show, please let Sherry know.

## The Inn at Brookeville Farm Year Long Exhibit

Have dinner at the Inn at Brookeville Farm and enjoy the art created by OAA members. Due to the blizzard of 2016 the exhibit was installed on February 1 and will remain up throughout 2016.

We want to thank Exhibit Coordinator, Sherry Jose' and her team for organizing and hanging this event again this year. The Inn is located at 19501 Georgia Ave, Brookeville, MD 20833.

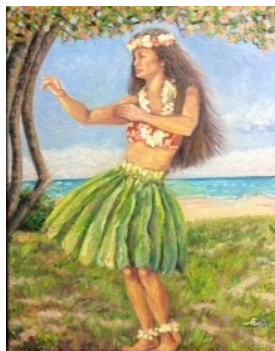
## Olney Library

On Saturday, February 6, a new exhibit of artwork by OAA members was installed in the **Olney Library**. Sixteen pieces, including works in oil, acrylic, watercolor, colored pencil and photography, are available for all visitors to see as they sit and read or work on their own projects. All pieces are for sale. Several new members are

offering their beautiful pieces in this exhibit for the first time. Whenever you are in Olney, take a few minutes to view this exhibit. If there is a painting that you particularly admire, email or call the artist. Compliments are always great to hear!

## Member News

- At the 82nd Annual International Exhibition of Fine Art in Miniature by The Miniature Painters, Sculptors and Gravers Society of Washington, D.C. (MPSGS). Show **Marcia Davis** sold *Wood's Edge* and **Sherry Jose** sold *National Cathedral*. **Shirley Tabler** and **Genevieve Roberts** each sold one piece and **Mimi Hegler** sold two pieces.
- **Genevieve Roberts** sold a miniature at the Fell's Point Show.
- **Helen Ryan** sold one of her oil paintings that was on display through the Rossmoor Art Guild in Clubhouse 1 during the month of January, 2016.
- **Cecile Kirkpatrick** sold her artwork, "Glimpse into the Past," displayed at The Inn at Brookeville Farms last year.
- **Connie Gallerizzo** sold her painting *Midnight in Ocean City* on Facebook.
- **Sandra Cane** sold two paintings, five small shadow box paintings and several mini paintings in a shop in Hawaii called *A Summer Place*. The two larger paintings sold are shown here. Her abstract recently shown at Woodlawn Manor, also sold.



## Welcome New Members

**Carolyn De Haas**

Silver Spring, MD

carrotopdh@verizon.net

**Brian Kolling**

Rockville, MD

**Nancy Still**

Gaithersburg, MD

nancy@miniartsupply.biz

## OAA Wishes a Happy Birthday to :

Lori Myers	Jan. 7	Barbara Kahla	Feb. 10	Karen Norman	Feb. 28
Lana Ogram	Jan. 13	Max Leason	Feb. 10	Kent Norman	Mar. 8
Paula Bowen	Feb. 1	Phyllis McElmurray	Feb. 15		

Members can email Sally Drew at [swdrew@verizon.net](mailto:swdrew@verizon.net) with their birthday info: day and month only- no year - or leave that information at 301-774-2125.

## Events

***Power and Pathos: Bronze Sculpture of the Hellenistic World***, National Gallery of Art, West Building, Main Floor; December 13, 2015 – March 20, 2016

***Seeing Nature: Landscape Masterworks from the Paul G. Allen Family Collection***, The Phillips Collection 1600 21st Street, NW Washington, DC 20009; February 6 – May 8, 2016. Featuring 39 masterpieces spanning five centuries, this exhibition draws from the Paul G. Allen Family Collection to explore the evolution of European and American landscape art.

***From Rye to Raphael: The Walters Story***, The Walters Art Museum, 600 N. Charles Street, Baltimore, MD; 410-547-9000. On view 10 a.m.–5 p.m., Wednesday through Sunday and until 9 p.m. on Thursdays. From Rye to Raphael: The Walters Story brings together for the first time an extraordinary group of art and artifacts to illustrate the intriguing stories behind the magnificent gift to the City from the Walters family. The dramatic new installation features 200 works chosen for their beauty and craftsmanship as well as never-before-seen Walters family photographs and historic material culled from the museum's archives.

***In the Library: The Convergence of Commerce and Instruction in Art***, National Gallery of Art, East Building, Ground Floor, Study Center; February 22 – June 3, 2016, This exhibition is open 10 am to 5 pm Monday through Friday. It is not open on weekends. The art we experience often depends as much upon the materials available to the artists who make it as it depends on the artists themselves. This exhibition looks at a variety of literature surrounding artists' materials and instruction, and charts the ways in which the increasing commercialization of their production may have affected the practice of artists, especially following the industrial revolution.

### OAA OFFICERS FOR 2015 to 2016

Connie Gallerizzo	Co-President	301-854-2229 haircj123@yahoo.com
David Terrar	Co-President	301-253-4589 david_terrar@msn.com
Craig Whitt	Vice-President	301-758-5238
Sally Drew	Secretary	301-774-2125 swdrew@verizon.net
Deborah Wolfe	Treasurer	301-570-0735 dwolfe927@verizon.net
Barbara Kahla	Membership	301-996-9360 barb.kahla@gmail.com
Nancy Halladay	Publicity	301-924-9693 nah826@aol.com
Lori Myers	Newsletter	240-477-0843 lmyers1761@live.com

### OAA Website

[olneyartassociation.org](http://olneyartassociation.org)

Sherry Jose' is point of contact for the OAA website:

If you would like to put a digital photo of your artwork on the website, please email Sherry...each member will be allowed (1) image at a time and you may change them at any time. We need photos of your paintings for the gallery.

Email Sherry at:

jose2325@aol.com



---

# Kritt's Tip

---

## Puddle Technology

By Penny Kritt

I think every painter has experienced that soul-crushing moment when you realize that you ran out of that perfect color that you mixed. Even if you dutifully measured exact quantities of the component paints (yeah, like that really ever happens. . .), the odds of reproducing a specific color are astonishingly small.

Here are some tips that might just prevent that from ever happening to you again. Really? Yes, really!

Even if you're working on a small project, some colors, like skin tones for portraits or that perfect color for cherry blossoms, never come from a tube. And if you're doing a large format painting, the potential for disaster is even greater. The trick is to plan before you mix the color!

It works the same for watercolors, oils and acrylics. Let's say your project is measures 18 x 24 inches and two thirds of the composition is a cloudless sky. Don't even think of using an unmodified blue right out of the tube. The right sky color for a project this big just doesn't exist in a standard form, at least not for an artist above the "complete amateur" stage.

Here's how to measure how much color you need:

Mix the exact color you want and make a big swatch of it to keep a sample to duplicate in quantity. Then get a piece of watercolor paper or a canvas that's the size you plan to work on. You can even use an old painting that didn't work, one you just kept for scrap use. You'll have to plan for enough paint to cover at least 300 square inches. It's a lot of paint, so how can you tell the proper amount in advance?

For watercolor: Get a measuring cup and start with about  $\frac{3}{4}$  of a cup of clean water. Yep, it's that simple. Then take a brush and start covering the area in question. Do you have enough to cover the surface? If not, measure how much additional wa-

ter you'll need. Then add half again as much of the total so you'll have plenty of color that will always be perfect! For example, if you found you needed one cup of water to cover the area, be sure to use  $1\frac{1}{2}$  cups to build the final color.

Put the right amount of water (with the extra you've already planned for) in a jar with a tight lid and start adding paint. You beginners will probably be appalled at how much paint you have to add to get the right color and value. With most blues, a huge squirt will barely show up since blue pigments tend to have relatively little tinting strength. With most yellows, one generous squirt will make the whole container the same color as what came right out of the tube. And reds are usually somewhere in the middle.

By the time you add the paint to mix the final color, you'll have a lot of extra mixture that might just be useful in case you decide you want to do a companion piece or, heaven forbid, start over if the first attempt doesn't work out.

Let me guess – you've already run short on a critical color? Now, aren't you glad you found this out before you started that painting?

For oils and acrylics: Find that tube (or tubes) of colors that seemed such a good idea in the art store. You know the one(s) that turned out to be awful and you never used? Those are the perfect ones to see how much you need to cover all that area on your paper or scrap canvas! Pay attention to how much you squeeze out and then see if you guessed right. If not, note how much more you had to squeeze out to cover the area.

As with the watercolor folks, you want your final puddle of mixed color to be  $1\frac{1}{2}$  times the amount of the initial coverage color. Store the extra in an airtight container for future use.

Contact Penny at 301/989-1799

or visit [www.pennykritt.com](http://www.pennykritt.com)

©Penny Kritt 2016

---

## Classes

**Penny Krittr's Montgomery County Classes** – Register online at [www.activemontgomery.com](http://www.activemontgomery.com) and search for “Kritt” to find all my classes. You can also register at your library or community center.

### Composing Art with Kritt Weekend Workshop – 2 days

All Levels: Make art that's good enough to frame! Tired of boring landscapes? Lots of shapes or fewer? Do you need a background? Learn from a pro what it takes to get into art shows. For this class all you'll need is a notebook. For supplies, call Penny at 301-989-1799

Saturday/Sunday - April 30-May 1  
(10am – 4pm)  
Class No 16739  
Kritt Studio, Burtonsville, MD

### Drawing Made Easy with Kritt– 6 classes

All Levels: Draw people and buildings, landscapes and anything else. Learn about shapes and edges. That's all there is and you can do it! Draw from photos or from life. I'll teach you how to use the *magic* in your pencil! For supplies, call Penny at 301-989-1799

From April 12, 2016 to May 24, 2016  
Tuesday from 10am to noon, Class No. 16737

Tuesday from 7pm to 9pm, Class No. 16738  
Except Tuesday, April 26, 2016  
Kritt Studio, Burtonsville, MD

### Painting the Seaside with Kritt – 7 classes

All Levels: Watercolor and Acrylics. It's fun and easy to paint sandy beaches, waves crashing on rocks and kids splashing in the surf. Want sailboats, seagulls and palm trees? Learn simple ways to show the joy of a day at the beach. For supplies, call Penny at 301-989-1799

April 11, 2016 to May 23, 2016  
Monday from 10am to noon, Class No. 16735  
Monday from 7pm to 9pm, Class No. 16736  
Kritt Studio, Burtonsville, MD

### Kritt Studio Private Classes Register directly through Penny (301/989-1799)

**On-going Open Studio**  
For more than 12 years, every Wednesday morning, a group of talented artists meet to share ideas, inspirations and to get a professional critique on their work. Topics can range from best materials for a project to composition and design help. If you're an advanced

artist – or you'd like to learn to paint like one, this is the supportive place where your talent will blossom.

### Wednesdays (10A – noon) Kritt Studio, Burtonsville, MD Learn to Draw in One Day - Workshop!

It's amazingly easy to learn to draw. A few simple steps will get you started on a skill that you'll enjoy for the rest of your life. Do you just want to keep a sketchbook? Or maybe you're a professional artist who wants to capture shapes more accurately. You may even already have all the necessary supplies around the house. Join Penny Kritt in her studio for a day of accomplishment! For supplies, call Penny at 301-989-1799

Limit 5 students per class (*chocolate will be served!*) \$75.00

Session 1 - Sunday, April 17 (10 am – 3 pm) *OR*  
Session 2 – Thursday, May 5 (10 am – 3 pm)  
Kritt Studio, Burtonsville, Maryland

## Call for Artists

The Meeting House Gallery at The Oakland Mills Interfaith Center is accepting applications for future exhibits. Artwork in all media and styles which can be hung, including wall sculptures, is acceptable. The gallery is large, has new lighting and new display shelves for three dimensional work. More than 3,000 people visit our building each week and you may tour the facility at your convenience. Hours are 8:00 a.m. - 9 p.m. daily (closed on federal holidays). You will find information and an application at [www.themeetinghouse.org](http://www.themeetinghouse.org).

### The Meeting House Gallery

~ Exploring diversity and celebrating unity through the Arts ~

Oakland Mills Interfaith Center  
5885 Robert Oliver Place  
Columbia, Maryland 21045-3786  
410-730-4090 | [www.themeetinghouse.org](http://www.themeetinghouse.org)

IS IT SUPPOSED TO BE LIKE THAT  
OR IS IT JUST HOT IN HERE?



“Is it supposed to be like that or is it just hot in here?”

## OAA Sweatshirts

Made to Order



– **Only \$30!** Embroidered with the Olney Art Association name, web site and an artist's palette and just in time for those cool spring morning walks, paint-outs, photographs, and general outdoor activities. The sweatshirt is made by Jerzees in a 50/50 cotton/poly blend, so it is easy care – just toss it into the washer and dryer. It is available in twenty-four different colors and sizes from small to 4XL. To order yours, just send an email to [swdrew@verizon.net](mailto:swdrew@verizon.net) or talk to Sally Drew at the next OAA meeting.



## Giclée Printing & Photography

Create Fine Art Reproductions of Your Artwork on Watercolor Paper or Canvas

### A Work of Art by Debra Halprin

.11 cents per sq. inch on paper  
.14 cents per sq. inch on canvas  
\$35 Photography Fee - Includes Proofs and Color Enhancements

For All Your Giclée Printing Needs

[www.Halprinart.com](http://www.Halprinart.com)

[Halprinart@aol.com](mailto:Halprinart@aol.com)

301-260-9701

Penny Kritt 301-989-1799

*Classes and private lessons in a working art studio*

Painting Drawing Color Theory  
Design & Composition

Beginners - a calm, supportive place  
Intermediate & Advanced - move your art  
to a higher level

[www.pennykritt.com](http://www.pennykritt.com)

## Artful Framers of Olney

Custom Framing

**25% DISCOUNT** for OAA members

George Miller  
3426 Olney-Laytonsville Road  
Olney, MD 20832  
(301) 570-0223

Open: Monday & Saturday 10 AM-5 PM

Tues.-Fri. 10 AM-6 PM

