

April 2012

Olney Art Association

Visit our website at:

olneyartassociation.org



OAA

Newsletter

Calendar of Events

- Sun, April 22 Sandy Spring Museum—reception 2—4PM
Tues, May 1 Members meeting 7PM Buffington Bldg/Olney
Sun, May 6 Ranazul Restaurant—to hang show—9AM
Sun, May 20 Ranazul Restaurant—Reception 4-5PM
Wed, May 30 Sandy Spring Museum—take down show 10:00 AM.—Noon
Sun, June 3 Ranazul Restaurant—take down—9AM
Wed, June 6 Board meeting 10AM
Wed, July 3 Members meeting 7PM Buffington Bldg/Olney
Wed, Aug 1 Board meeting 10AM
Wed Sept 4 Members meeting 7PM Buffington Bldg/Olney
Fri, Nov 2 Woodlawn—Hang Show
Sun, Nov 4 Woodlawn Reception 12 noon to 4PM
Sun, Nov 11 Woodlawn Take-Down 4PM



Spring has sprung!

MESSAGE FROM CO-PRESIDENTS

We hope all of you are “*Springing*” into action as fine artists and creating your best works yet!

The OAA Board proposed that we change Section 2: (Dues) in our by-laws to read as follows:

2A: Membership dues shall be \$25 per year, payable to the treasurer no later than 31 January of each year. Any member not paying dues by January 31 will be dropped from membership. All members must have paid dues in order to participate in any show.

2B: New members shall pay \$25.00 annual dues at the time of enrollment.

Note: We will vote on this change at our next member meeting, May 1. J. Jordan Bruns will be our presenter.



Sincerely, Sherry Jose' and Debby Wolfe

PREVIEW: May 1, 2012 Meeting

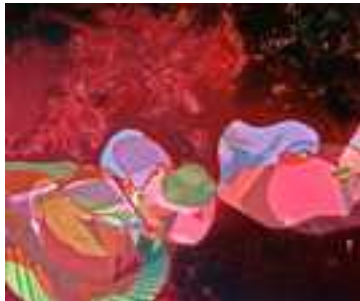
J. Jordan Bruns

“Choosing Colors”

Many art students of mine, especially those in my beginning level classes have told me that they have a hard time choosing between similar colors. “When do I use an ultra-marine blue vs. a colbalt blue? How many reds should I have on my pallet?” More recently, I have been seeing more and more validity in working in a limited pallet, or a pallet derived from just a few colors. The obvious benefit is that the artist does not have as many *out of the tube* choices (and can create a painting much faster); the added benefit is that a limited pallet enables more advanced artists to really focus on creating a mood through color.



As a painter, I’ve always pre-mixed my colors before I start a painting, but more recently I’ve adopted a painting method described in James Gurney’s [Color and Light](#) book which incorporates painting with a “color gamut”. This method eliminates a large portion of the color wheel to enable simplicity, but also a more sophisticated approach to creating a colorful painting. jjbruns.com



Classes given by J. Jordan Bruns

at the **Yellow Barn**, Glen Echo, MD

Basic Principles of Drawing

Wed., April 11—June 13 1 — 3:30pm, Tuition \$275

Fundamentals of Painting (Beginner to Intermediate)

Thurs, April 12—June 14 9:30am—12pm, Tuition \$275

Experimental Drawing (Intermediate to Advanced)

Fri., April 13—June 15 9:30am—12pm, Tuition \$275

Abstract Representation

Fri. April 13—June 15 1—3:30pm, Tuition 275

To register online: www.yellowbarnstudio.com or

www.glenechopark.org

Or phone: 301-634-2226



Welcome New Members !!

Rosalind Alumanah

Paul Goetzinger

Dawn Reid

Constance Lofgren

Marcia Nilson



MEMBER NEWS

—**Jennifer DeWeber**—attended a annual figure drawing workshop with Cedric and Joannette Egeli in Edgewater, MD in January. **Note from Jennifer:** This is an amazing & intensive workshop stressing excellent figure drawing from an anatomy perspective in the mornings and painting portraits in the afternoon. The first 2 wks of this annual workshop are general instruction, but the 2nd 2 wks require a portfolio review or the Egeli's knowledge of an artist's skills in order to participate. There are nice dorms about a mile from their studio which are very nice and reasonably priced. If you want to brush up on your portrait drawing skills, or push yourself further, this is definitely worth considering...but be prepared to work hard. The Egeli's teach painting classes on the beach in Provincetown, MA on Cape Cod.

<http://www.egelistudio.com>

—**Kay Fornatora**—has a painting in the Strathmore Member Show and the Jewish Community Center Senior Show

—**Connie Gallerizo**—has a new website: www.conniesartgallery.com It looks great Connie!

—**Cathy McDermott and Marian MacKerer**—both entered the Annual **Art-in-the-Box** Show at the Artists Gallery in Frederick, MD , March 2—March 31. The boxes went to the highest bidders.

—**Genevieve Roberts**—won 1st place in Printmaking and 3rd place in Miniatures at the Chevy Chase Women's club exhibit. She also sold her 1st place winner "Cotswold Hamlet." Great job!!

Craig was also juried into the Chevy Chase Women's Club exhibit.

—**Debby Wolfe**—was invited to show in Dec. 2015 at the Ratner Museum Gallery in Bethesda.

NOTE: Please email Debby Wolfe at : dwolfe927@verizon.net or call 301-570-0735 with member news.

—**Craig Whitt**—there will be a "reduced price" sale of Craig's work available on May 4th at Faith Presbyterian Church , 17309 Old Baltimore Rd., Olney, MD 20833. This exhibit and sale is titled "Paved Night At The Arts" and will also feature a musical performance by Jonathan Doulden. *Free to the public.*

TIPS FOR PAINTERS



The same ground pigments are used to make every medium. The Cadmium Red pigment in watercolor is the same Cadmium Red used by the manufacturer in oil paint, acrylics and pastels. If a pigment is transparent in watercolor, it is also transparent in oils, although it may seem opaque because of the painting technique. Knowing the differences in paint characteristics helps you make better choices when you select colors for glazing and mixing.

From: Nita Leland, *confident Color, an artist's guide to harmony, contrast and unity*, Copyright 2008, published by North Light Books

EVENTS & Call for Entries

—**Delaplaine Visual Arts Education Ctr, 2012 Annual Juried Show**—Frederick, MD—open to all US artists/all mediums welcome—entry fee \$30 for nonmembers—entries due May 7, 2012—juror will be Sue Spaid, Exec. Dir., Contemporary Museum, Baltimore, MD. www.delaplaine.org (click on exhibits, then exhibits opportunities).



—**The Sheep & Wool Festival**—annual event held in May at the Howard County Fairgrounds. You may enter only paintings which depict sheep or wool. This is a great venue and a lot of fun. To learn more: www.sheepandwool.org

—**Sandy Spring Museum Show**—OAA has 35 members participating—artists reception April 22nd, from 2–4pm. Show runs through May 27.

—**La Galeria at Ranazul Exhibit**—OAA —entries accepted until April 15. Reception May 20th, from 4–5pm. Marcia Nilson/chairman Show runs May 6– June 2. Maple Lawn, Maryland.

—**Meeting House Gallery, Columbia, MD**—entries now being accepted for 2012 exhibits. Deadline dates are: May 11, 2012 and July 13, 2012. All Maryland artists. For more information : themeetinghousegallery@gmail.com

—**MAA Gallery April Show**—through Sun. April 29th— *The Montgomery Art Association*—featured artist is Barrie Ripin. Located at Westfield Wheaton Mall, upper level near Panera Bread Open Thurs, Fri, Sat: 12–8pm and Sundays: 1-5pm maagalleryArtists@gmail.com

—**Gallery B** —presents **The Pate' Painters**—May 2nd to May 27th, 2012. Reception: Fri, May 11, 6-9pm. 7700 Wisconsin Av, Ste E (formerly Fraser Gallery), Bethesda, MD—hours: Wed-sat 12-6pm, Sundays 10-2pm. For information, call 301-260-9701 or 301-910-4750.

—**Susan Herron's Acrylic Landscape Workshop**—June 4 & 5—10am to 4pm—cost \$100—will be held at the Asbury Diamond Arts & Crafts Room. To register and get a supply list, mail your check to Susan Herron, 10629 Seneca Spring Way, Montgomery Village, MD 20886. **(ALL NEW DEMOS!!)**

—**Brenda Kidera Fine Art Workshops**—please access Brenda's website for a complete list of spring classes and supply lists. www.KideraFineArt.com Brenda's workshops are in Woodbine, MD

—**Carroll County Farm Heritage—Paintings by Jerry DeWitt**—thru May 3rd. 1601 Washington Rd, Westminster, MD 21157 carrollcc.edu Gallery hours: Mon-Thur, 9am-8pm, Fri-Sat, 9am-3pm

—**The Yellow Barn—Glen Echo, MD—Art event: Benefit for Children at NIH**—proceeds for art supplies for children in residence at NIH. June 8, 6:30pm-9pm. 7300 MacArthur Blvd., Glen Echo, MD 20812. Also: Paintings by Nancy Baker & Don Srull "Maine to points South" (April 21 -22, reception Sat., April 21, 5–8pm, gallery hours Sat/Sun 12–5pm.





March Meeting— Bill Schmidt

Landscape Paintings

We were all entertained by Bill's humorous presentation and demo of a landscape oil painting and enjoyed meeting his lovely wife Dottie. Here's a bit of trivia for you: **Bill was president of OAA back in the 80's!**

Bill kept us laughing as we watched his painting take shape over the course of the evening....he is fascinating! He starts his pencil sketches en plein air using a viewfinder and establishing the eye line. From his pencil sketch, he then creates an outline charcoal drawing on the canvas and then using ultramarine blue and mineral spirits, draws in the design over the charcoal drawing. He creates a value painting on the canvas using a mixture of alizarin crimson and ultramarine blue. Next, he establishes the darkest dark and the lightest light on the canvas and blocks in major areas of the canvas. Color comes last. *Very important to be sensitive to aerial perspective.* **Keep in mind the following overall approach to landscape painting:**



- Rearrange** the elements as needed
- Simplify** major areas of the painting
- Emphasize** both colors and sizes of elements to support your design



To see more of Bill's work and inquire about his workshops go to: www.billschmidt.net

Penny Kritt 301-989-1799
Classes and private lessons in a working art studio
Painting Drawing Color Theory
Design & Composition
 Beginners - a calm, supportive place
 Intermediate & Advanced - move your art
 to a higher level
www.pennykritt.com

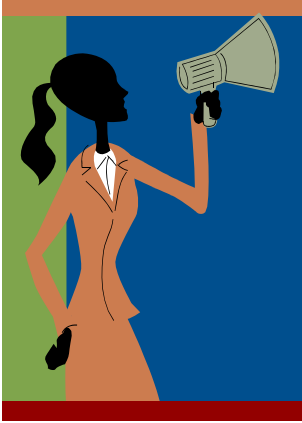
Fine Art Reproduction Services:
Digitize & Frame your artwork in 2012!

PHOTOSHOP • CUSTOM FRAMING • SIGNS
With this Ad...
 - %10 off - Your First Art Scan & a Free CD of your file
 - FREE - Second Mat on First Frame order
In Damascus! 26023 Ridge Rd.
301-253-1444 • robysphotoshop.com

giclée printing services
 excellent quality, reasonable prices

- You drop off your artwork in Sandy Spring, MD (near Olney)
- We take a high resolution TIFF format photograph under balanced lighting
- Your prints are made using lightfast Epson K3 inks and acid-free fine art paper
- Turn-around time is about one week
- Cost is about \$80 for a 17x22" sheet of prints, any size or number on that sheet you wish— includes all fees, and sliding scale if you order more than one

 **ARHouse**
 17520 Doctor Bird Road Sandy Spring, MD 20860
www.arhouseart.com
susan@susanavismurphy.com
 301-774-3418



CALLING ALL MEMBERS

We are always on the lookout for new venues to exhibit our art and we need ***all members*** to please help us with your suggestions. Please contact Sherry at jose2325@aol.com or Debby at dwolfe927@verizon.net. **Remember—teamwork!**

If you know of a member who needs to be remembered with a card due to serious illness or death , please contact Selma Robey 301-216-5416 and she will send a card from our membership.

OAA WEBSITE

Sherry Jose' is point of contact for the OAA website:

olneyartassociation.org If you would like to put digital photos of your paintings on the website, please email Sherry....each member will be allowed (1) image at a time and you may change them at any time. We still need photos of your paintings for the gallery. Email Sherry at: jose2325@aol.com



OAA OFFICERS FOR 2012 to 2013

Sherry Jose	Co-President	301-681-4786	jose2325@aol.com
Debby Wolfe	Co-President	301-570-0735	dwolfe927@verizon.net
Craig Whitt	Vice-President	301-758-5238	
Sally Drew	Secretary	301-774-2125	swdrew@verizon.net
Donna Moeller	Membership	301-774-0208	dmoe43219@aol.com
Selma Robey	Treasurer	301-216-5416	robey87@comcast.net