



# Olney Art Association

ESTABLISHED IN 1974

Visit our website at:  
[olneyartassociation.org](http://olneyartassociation.org)

## *You are invited!*

*To a very special luncheon celebrating the  
40th anniversary of*



*Olney Art Association*

*On November the 15th  
From 12:00 until 2:00*

*The Narrowbacks, an Irish music band,  
will provide music*

*The only entry fee is a dish prepared by you:  
Main Dish \* Side Dish\* Beverage \* Dessert*

*(Please email RSVP what you intend to bring to Karen Norman at  
waterkart@gmail.com)*

*Come a little early with your dish in hand  
To the Doctor Bird room*

*At the Sandy Spring Museum  
17901 Bentley Road  
Sandy Spring, MD 20860*

## Inside

President's Message	2	Events	3	Member News	4
Meeting News	2	40th Anniversary	3	Woodlawn Manor	5
Note the Date	2	Classes & Workshops	3	Kritt's Tip	6

## President's Message

Dear Fellow Artists,

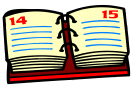
I am reading a wonderful little book about Rembrandt. One of Rembrandt's students recorded a precept that the master held up to his pupils:

"Make it a rule consciously to practice what you already know; you will then discover that which escapes you and what you wish to learn."

What a rule to follow, practice what you already know! I urge each one of you to do this over the long winter months ahead. You will grow and be much better able to discern what you need in order to be even more creative!

Until next time,

Karen



## Note the Date

### 2014

Fri Oct 31

Hanging the Woodlawn Show. Drop off from 12 noon - 12:30 p.m. **Woodlawn Manor does not open until noon, therefore NO art will be accepted before noon.**

Sat Nov 1

The OAA Annual Show at Woodlawn Manor Begins. Noon-4 p.m. daily

Sun Nov 2

Reception at Woodlawn Manor, 12 noon-4 p.m. Award ceremony begins at 2 p.m.

Sun Nov 9

Take Down Show & Pick up Artwork at Woodlawn Manor, 4-5 p.m. Artwork may not be removed from Woodlawn until after 4 p.m.

Sat Nov 15

OAA 40th Anniversary Celebration.

Sat Nov 22

New exhibit at the Olney Library. Pick up of artwork currently on display and drop off of new artwork, 10-11 a.m.

### 2015

Tue Jan 6

OAA Meeting, 7-9 p.m.

## Meeting News

In lieu of a meeting in November we are having our OAA Annual Show at Woodlawn Manor. starting November 1. Our next meeting is scheduled for January 6, 2015. (Time and place to be announced.)

Joan Bevelaqua was our speaker in September. Joan's topic was : *Achieving Convincing Highlights and Shadows.*

Joan Bevelaqua has made a mark on many aspects of the art community. A painter who

works primarily in watercolor and oil, Joan has held teaching positions, juried art exhibitions, and directed several galleries. Joan has been teaching at UMUC since 2000 and is now full time faculty. She paints in her studio at Howard County Center for the Arts, in Ellicott City, Maryland.

Her website is:

[www.joanbevelaqua.com](http://www.joanbevelaqua.com)



## OAA 40th Anniversary Luncheon

Begun in 1974 by a handful of Olney Artists, OAA turns 40 this year with a membership of more than eighty. We are celebrating this milestone with a Luncheon at Sandy Spring Museum on November 15, 2014, 12 noon – 2 p.m. Please plan to bring your favorite dish (please email

Karen Norman at [waterkart@gmail.com](mailto:waterkart@gmail.com) to let her know what you want to bring: Main dish, Side Dish, Dessert or Beverage (White wine is permitted, No Red). Live Music by the Narrowbacks, an Irish music band. This event will replace the end of the year holiday luncheon.

## Events

**Andrew Wyeth: Looking Out, Looking In**, National Gallery of Art, West Building, Main Floor  
May 4 - November 30, 2014.

**Timeless Traditions, Today's Landscapes: An Exhibition by the Washington Society of Landscape Painters**, Exhibit on View: Wednesday, October 8 – Saturday, November 1, 2014. Meet the Artist Reception, Saturday, October 18, 5:30 – 7:30 pm. Painting Trees Workshop taught by Artist Barry Lindley: Saturday October 18, 9:30am – 1:30pm (\$85 fee). Free Landscape Painting Demonstration by Artist Bill Schmidt: Saturday, October 25, 10:00am – 11:00am. Black Rock Center for the Arts, 12901 Town Commons Drive, Germantown, MD 20874

**81st Annual Exhibition of Fine Art in Miniature**, November 22, 2014 - January 4, 2015 The Mansion at Strathmore, 10701 Rockville Pike, North Bethesda, MD 20852-3224, Exhibition Hours: Tuesday, Thursday, Friday, Saturday - 10AM-4PM; Wednesday - 10AM-9PM; Sunday - 12PM-4PM; Closed Monday. ART & WINE NIGHT December 11

**Winter Glow 2014: Art League of Germantown Show & Sale**, Exhibit on View: November 5 – 9, 2014 Opening Reception: Wednesday, November 5, 5:30 – 7:30 pm, Meet the Artists Reception: Sunday, November 9, 1:00 – 3:00. pm, Black Rock Center for the Arts, 12901 Town Com-

## Classes

**Painting Autumn**, classes at the Kritt Studio offered through Montgomery County Recreation Dept. Morning (No. 390522) and evening (No. 390523) sessions start Tuesday, 11/11. For more information, call Penny Kritt at 301/989-1799.



### Watercolor Workshop

with Karen Norman

**9:30 am-12:30 pm**  
on the following **Tuesdays**:  
October 28 • November 4 • November 11

**3 Sessions - \$75.00**

Classes will be held in the **Thirdwing Studio** located at 7 Thomas Drive, Silver Spring, MD 20904

Each class will have a short segment in art history pertaining to watercolor, demonstrations of concepts and techniques, and painting time from a particular subject. An equipment list will be provided. Workshop is limited to 8 participants.

Call **301-622-3770** or email [waterkart@gmail.com](mailto:waterkart@gmail.com) for more information or to register.



# Member News

- **Sara Becker** is OAA's new treasurer, confirmed in a vote at the September meeting.
- **Glen Matteson** exhibited his work at Leisure World in September.
- The MPSGS show at Strathmore this year will have an opening reception on November 23rd from 2 to 4 p.m. in which 14 of our members will be featured. They include **Ingrid Barnes, Sara Becker, Carole Celler, Marcia N. Davis, Cathy deLorimier, Mimi Hegler, Sherry Jose', Nancy M. Leak, Karen Norman, Dan Ranhart, Genevieve Roberts, Helen Ryan, Joanne Senall, Shirley Tabler** and **Deborah Wolfe**. **Mimi Hegler** took 2nd place in Graphic Arts.
- **Karen Norman** had two paintings juried into MFA Circle Gallery, Annapolis, National Juried Exhibition, October 31st to November 29, 2014.

## Welcome to New Members

Fred Flaharty  
Of Olney, MD

Carol Romanowski  
Of Silver Spring, MD

Email: [fred.flaharty@verizon.net](mailto:fred.flaharty@verizon.net)

Email: [caroldance62@aol.com](mailto:caroldance62@aol.com)

INVITE A FRIEND, ACQUAINTANCE, CLASSMATE OR ARTIST TO A MEETING.  
TODAYS GUEST, TOMORROW'S MEMBER.

### OAA OFFICERS FOR 2013 to 2014

Karen Norman	Co-President	301-622-3770 <a href="mailto:waterkart@gmail.com">waterkart@gmail.com</a>
Peggy Tadej	Co-President	301-754-0140 <a href="mailto:ptadej@comcast.net">ptadej@comcast.net</a>
Craig Whitt	Vice-President	301-758-5238
Sally Drew	Secretary	301-774-2125 <a href="mailto:swdrew@verizon.net">swdrew@verizon.net</a>
Sarah Becker	Treasurer	301-216-0861 <a href="mailto:thebeckers6400@verizon.net">thebeckers6400@verizon.net</a>
Barbara Kahla	Membership	301-996-9360 <a href="mailto:barb.kahla@gmail.com">barb.kahla@gmail.com</a>
Joanne Senall	Publicity	240-372-1871 <a href="mailto:jsenall@hotmail.com">jsenall@hotmail.com</a>
Lori Myers	Newsletter	240-477-0843 <a href="mailto:lmyers1761@live.com">lmyers1761@live.com</a>

### OAA Website

[olneyartassociation.org](http://olneyartassociation.org)

Sherry Jose' is point of contact for the OAA website:

If you would like to put a digital photo of your artwork on the website, please email Sherry....each member will be allowed (1) image at a time and you may change them at any time. We need photos of your paintings for the gallery.

Email Sherry at:  
[jose2325@aol.com](mailto:jose2325@aol.com)



---

# OAA Annual Show at Woodlawn

---

## Hanging the Show

Bring entries juried into the show to Woodlawn on Friday, October 31, 2014 between 12 noon and 12:30 p.m. **No entries will be accepted before 12 noon.** The Hanging/Take Down Committee will receive the entries and hang them for display.

## Binwork

Binwork is limited to 5 pieces per artist. Matted artwork (16 x 20 or smaller) should be dropped off on Friday, October 31, 2014 between 12 noon and 12:30 p.m. as well. All art for the bins **must be clearly labeled**, matted and backed and shrink-wrapped or in plastic envelopes.

## The Show

The show opens on November 1. Each day during the run of the show we will need members to host the show, greet visitors, and handle sales of artwork.

## Reception

The Artist's reception is on Sunday, November 2, 2014 from 12 noon-4 p.m. To celebrate the **40th anniversary of OAA**, we will have **door prizes** at the reception. The drawing will take place at 3:45 and winners need not be present to win.

The Awards Presentation will be at 2 p.m. Our juror, Glen Kessler, will be on hand. Ten awards will be presented including Best in Show, 3 Juror's Awards and 6 Honorable Mentions.

Please mail the show postcards and email the flyer to your friends. This is a big day for the refreshment committee, which will receive the food and drink provided by members and set up and maintain the refreshment table as well as keep Woodlawn tidy during the reception.

## Artwork Pick up

Pick up your work on Sunday, November 9, 2014, 4-5 p.m. No artwork may be removed until **after** 4 p.m. The Hanging/Take Down Committee orchestrates this event.

## Woodlawn Committees

Many thanks to the Jury Committee. Drop off, registration and pickup went smoothly due to your efforts.

### Woodlawn Committees:

#### JURYING:

Craig Whitt – Chairperson  
Sally Drew  
Cecile Kirkpatrick  
Toni Tiu  
Barbara McCool

#### PUBLICITY

Peggy Tadej - Chairperson  
Debbie Wolfe

#### HANGING/ TAKE DOWN:

Ingrid Barnes - Chairperson  
Sandra Bourdeaux  
Ann Bolt  
Sherry Jose (Bin Work)  
Sally Drew  
Joanne Senall

#### HOSTING:

Barbara Kahla - Chairperson  
Rawligh Sybrant

#### AWARDS:

Sally Drew -Chairperson  
Roberta Staat

#### INVITATIONS/ BROCHURES:

Sally Drew -Chairperson  
Mimi Hegler

#### REFRESHMENTS:

Lori Myers-Chairperson  
Ann Bolt  
Dorre Faulkner  
Sherry Jose'  
Barbara Kahla  
Cecile Kirkpatrick  
Sam Maller  
Jane Maller  
Donna Moeller  
Craig Whitt  
Debby Wolfe

---



---

## Kritt's Tip

---

### Eyes!

By Penny Kritt

The eyes are usually the most interesting part of the face. Here are a few tips to make your artwork accurate.



**Iris:** Notice that you don't see the entire circle of the colored part of the eye called the iris. The top is usually cut off by the upper eyelid. The bottom part of the iris is often cut off by the lower lid. You only see the entire iris when a person is surprised or scared. The iris also will have a darker outer ring.

When the iris touches both the upper and lower eyelids, the iris will be wider where it meets the upper eyelid. There is almost never a case when the iris will be wider at the bottom unless you're into fantasy or goth!



**Inner and outer corners:** Most races will have the inner corner by the tear duct lower than the outer corner. One famous exception is Paul McCartney with those fabulous "bedroom" eyes. What made his eyes so special is that the outer corner was lower than the inner corner. If you add wrinkles just past the outer corner of the eye, however, it shows sagging skin and it will add age to the subject.



**Pupil:** The black circle in the middle of the iris is called the pupil. It is usually higher and closer to the upper eyelid than the lower one. If your version of an eye makes the person look dead, it's because you made the pupil too small. Be sure the pupil is black, not just a dark color.

**Highlights:** Eyes usually have one or more highlights. Make the most of it by putting one highlight that touches or overlaps the pupil. That white highlight against the black pupil will provide the greatest contrast of light and dark so even small highlights really help make the eye look real. If your reference photo has multiple highlights, just do one. Put the highlight near the upper and outer edge of the pupil near the outer corner of the eye

**Whites of the eyes:** The left and right sides of the whites of the eyes are vastly different shapes. The parts of an eye are like a jigsaw puzzle. If you are accurate with the shapes of the white, the iris shape will automatically be correct!

**Eyelashes:** While we're tempted to take a tiny brush and draw in each lash, resist it! Less is definitely more.

For classes or private lessons, contact Penny at 301/989-1799 or visit [www.pennykritt.com](http://www.pennykritt.com)

©Penny Kritt 2014

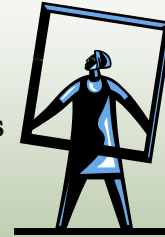
---

## Artful Framers of Olney

Custom Framing

**25% DISCOUNT** for OAA members

George Miller  
3426 Olney-Laytonsville Road  
Olney, MD 20832  
(301) 570-0223 Open: Monday & Saturday 10 AM-5 PM  
Tues.-Fri. 10 AM-6 PM



A Work of Art by Debra Halprin  
**Giclée Printing and Photography**  
Create Fine Art Prints of your Paintings  
on Watercolor Paper or Canvas

.09 cents per sq. inch on paper  
.12 cents per sq. inch on canvas  
\$25 Photography Fee Includes  
Proofs and Color Enhancement

**For All Your Giclée Printing Needs**  
[www.halprinart.com](http://www.halprinart.com)  
301-260-9701  
200 Rosalie Cove Court  
Silver Spring, MD 20905

**Penny Kritt 301-989-1799**  
*Classes and private lessons in a working art studio*  
Painting Drawing Color Theory  
Design & Composition  
Beginners - a calm, supportive place  
Intermediate & Advanced - move your art  
to a higher level  
[www.pennykritt.com](http://www.pennykritt.com)

### **Fine Art Reproduction Services:**

**Digitize & Frame your artwork in 2012!**



**PHOTOSHOP • CUSTOM FRAMING • SIGNS**

With this Ad...

- %10 off - Your First Art Scan & a Free CD of your file
- FREE - Second Mat on First Frame order

**In Damascus! 26023 Ridge Rd.  
301-253-1444 • [robysphotoshop.com](http://robysphotoshop.com)**

If you have any items for the OAA Newsletter, send them to Lori Myers at [lmyers1761@live.com](mailto:lmyers1761@live.com)